

Introducing...



ASG-TRAK

THE ALLIANCE SHIPPING GROUP



sales@allianceshippinggroup.co.uk



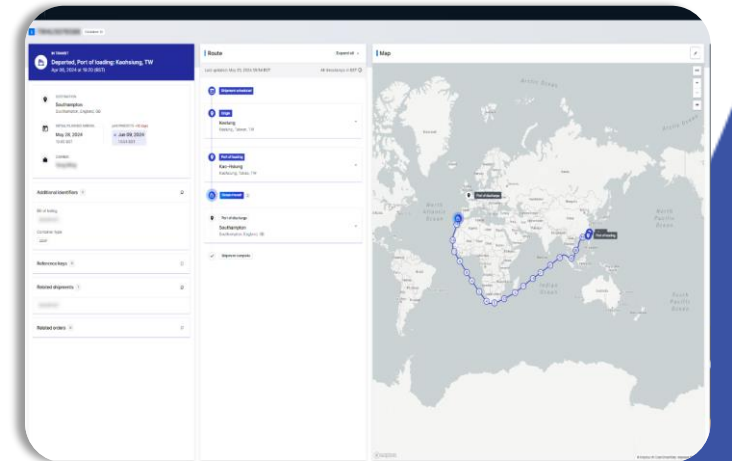
www.allianceshippinggroup.co.uk

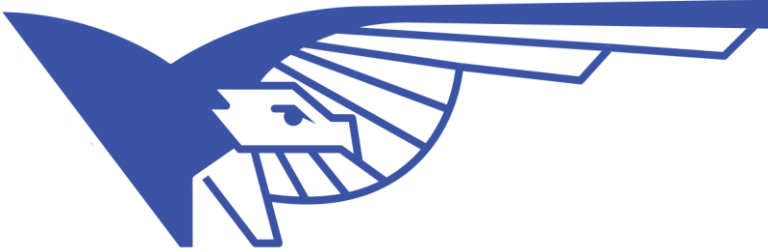


ASG-Trak™

Our Online Shipment Tracking Portal

Welcome to ASG-Trak™ - our state-of-the-art online shipment tracking portal, your one-stop solution for managing your logistics with ease and efficiency. This intuitive platform offers real-time visibility into your supply chain, empowering you to make informed decisions and streamline your operations





Key Features of ASG-Trak™

Comprehensive Tracking

Track your shipments from pickup to delivery with end-to-end visibility, ensuring timely deliveries and proactive issue resolution. Tracking can be drilled down to a purchase order/sales order level giving you full supply chain visibility in real-time.

The screenshot displays the ASG-Trak web application interface, which is designed for comprehensive shipment tracking and management. The interface is divided into several key sections:

- Dashboard:** Features a "Welcome back" message with the date "20th May 2024". It includes a summary of shipment statuses: "Awaiting Shipment" (1), "In Transit" (14), "Awaiting Clearance" (2), "Deliveries Scheduled" (6), and "Deliveries Available" (8). Navigation icons for "SEA", "ROAD", "AIR", and "REQUEST BOOKING" are visible.
- Logistics & Enterprise Tools:** Includes icons for "HOT SHIPMENTS", "PURCHASE ORDERS", "CALENDAR", "DOCUMENTS", and "REPORTS".
- IN TRANSIT Details:** Shows a shipment that has "Departed, Port of loading: Kaohsiung, TW" on "Apr 06, 2024 at 19:20 (BST)". It provides details for the destination (Southampton, England, GB), the retail planned arrival (May 28, 2024), and a predicted arrival window (Jun 09, 2024).
- Route & Map:** A map view showing the shipping route from Keelung, Taiwan, TW to Southampton, England, GB, with a "Port of loading" at Kaohsiung, Taiwan, TW.
- Sea Bookings Table:** A detailed table listing various shipments with columns for "Add'l Task Reference", "Import/Export", "Transport Mode", "Shipper", "Buyer", "Origin Port Code", "Discharge Port Code", "ETD", "ETA", "Terms of Shipment", "Planner", "Gross Weight (kg)", "Volume (CBM)", "Unit Number", "Equipment Type", "Customer Chosen", "Delivery Date", "Delivery Time", and "Commodity Type".
- Purchase Orders Table:** A table listing purchase orders with columns for "Status", "Shipment", "Order Number", "Supplier Name", "Country of Origin", "Vessel/Flight", "Container Number", "Ex-Factory", "ETD", "ETA", "Delivery Date", and "Unit Delivery Date".
- Job Details:** A section for "Job Details for" showing a timeline from "BOOKED" to "DEPARTED" to "IN TRANSIT". It includes a "Status" table with columns for "Status", "Container", "Event Date", and "Event Time", listing events like "Delivery Estimate", "UK Customs Cleared", "UK Customs Accepted", "ETA", "ETA Changed", "UK Customs Lodged", "Delivery Date Changed", "Delivery Date Changed", "ETA Changed", "ETD", and "Actual Time Departure".
- Purchase Order Details:** A section for "Purchase Order Details" showing a "Status" table with columns for "Status", "Description", "Order Number", "Order Date", "Order Type", and "Order Status".



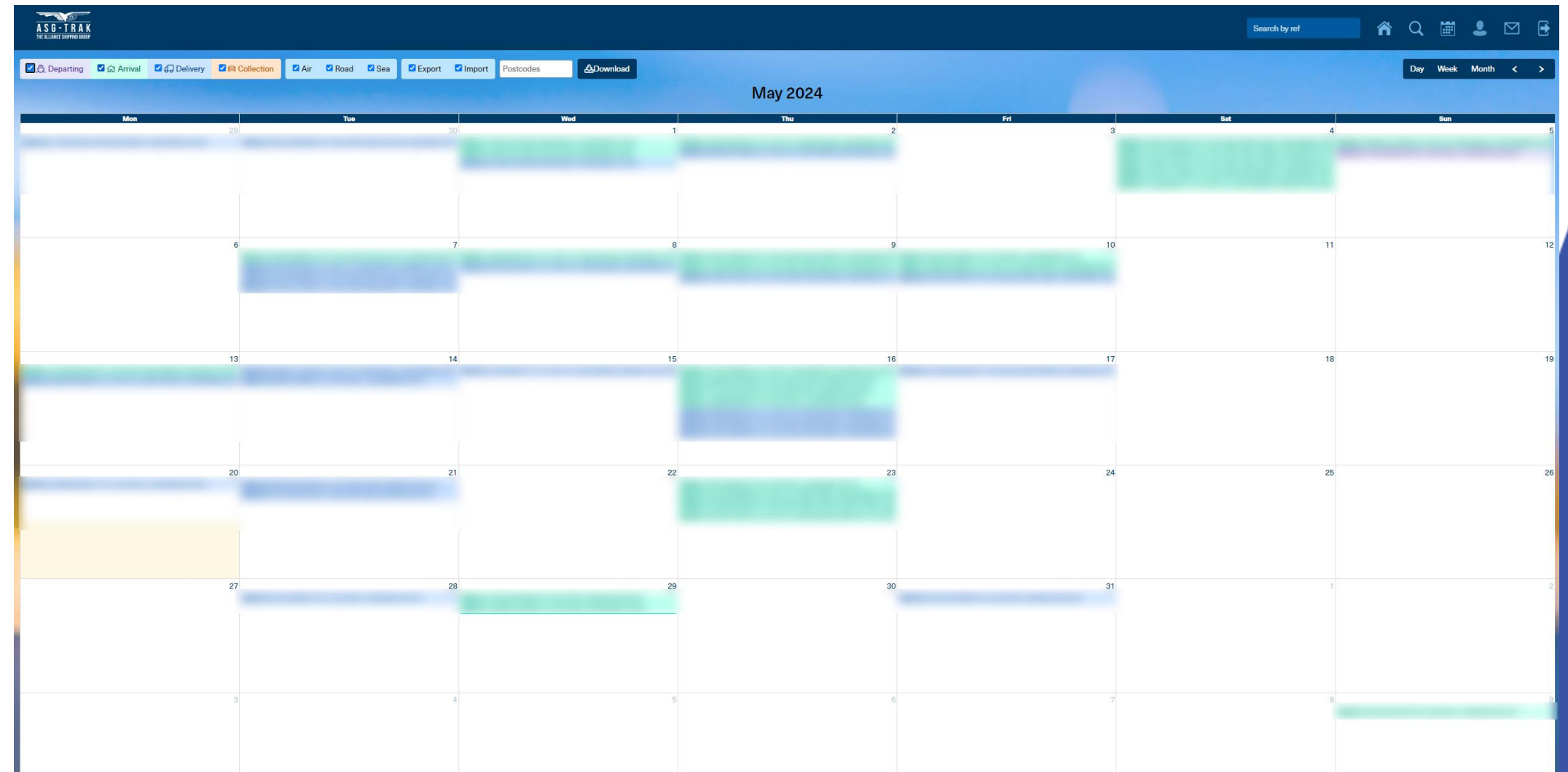
Key Features of ASG-Trak™

Calendar View

View your shipments on a calendar view displaying shipments by 4 key events:

- Collection
- Departure
- Arrival
- Delivery

The calendar can also be integrated into Outlook/iCal in order to show your shipment milestones

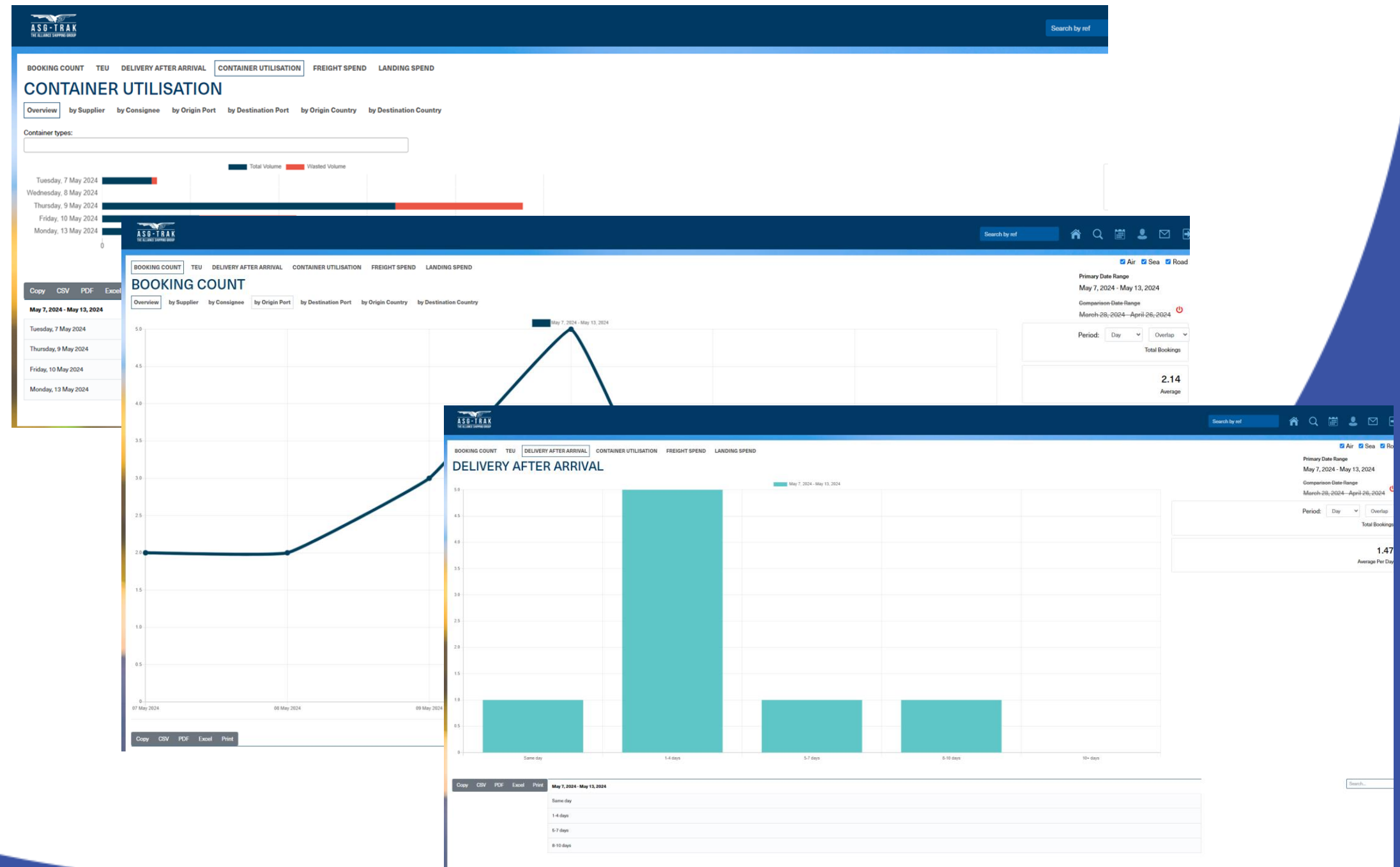


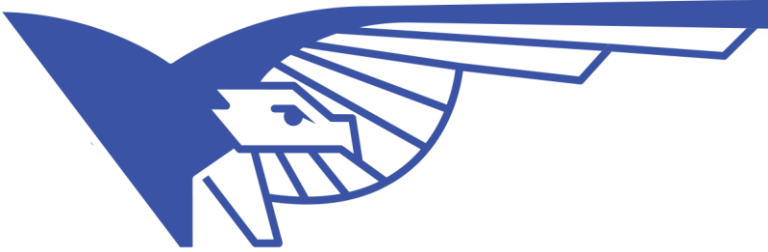


Key Features of ASG-Trak™

Smart Reporting

Generate detailed reports and analytics to uncover insights that drive operational improvements and strategic decision-making. In conjunction with “out of the box” top level online reporting, we can harness our internal systems to deliver complementing excel/CSV reports and API or EDI bridges as required.





Key Features of ASG-Trak™


Customised Alerts

Set up personalised alerts to stay informed about critical shipment milestones, delays, and exceptions, allowing you to respond swiftly.

Notification Settings

Notification	Frequency	All Shipments	Hot Shipments
[Redacted]	Per-Booking	Email <input checked="" type="checkbox"/>	Email <input type="checkbox"/>
Delivery Estimate		Email <input type="checkbox"/>	Email <input checked="" type="checkbox"/>
ETA	Per-Booking		
ETD	Per-Booking		

[Update](#)



ASG-Trak: Delivery Date Changed

Our Reference: [Redacted]
Shipper: [Redacted]
Consignee: [Redacted]

Container No.	Delivery Date	Time	Revised Date	Revised Time	Point
[Redacted]	26-May-2024		27-May-2024		

Related POs: [Redacted]

For further details please login to ASG-Trak [here](#)

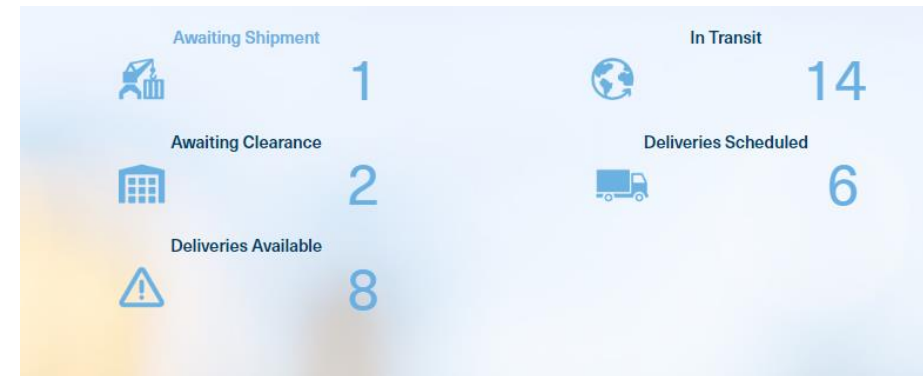
Date & Time of Change: 15-May-24 08:36



Key Features of ASG-Trak™

Intuitive Dashboards

Milestone based dashboards designed to allow you to monitor shipments throughout their lifecycle.



Online Booking

Bookings can be made online if required. Additionally, contracted rates can be made available for online quoting, allowing you to retrieve your rates as and when you need them

New Booking Request

Country of Despatch *

Country of Destination *

Service *

Mode of Transport *

Type of Shipment *

If any codes you require are not listed, please contact our customer service division.

Terms and Conditions
By clicking the next button, you will be accepting our trading conditions and entering into a binding contract with us. All of our business is undertaken subject to the current standard trading conditions of BIFA.

Hot Shipments

Nominate “hot shipments” that are important to you allowing you to keep a close eye on them





Real-Time Shipment Tracking



Geolocation

Through use of exact AIS Vessel location data, you can track your shipments' precise locations in real-time, ensuring timely deliveries.



Estimated Arrival

Using carrier data, AIS location data and AI algorithms, ASG-Trak™ provides accurate estimated delivery times to better plan your operations.



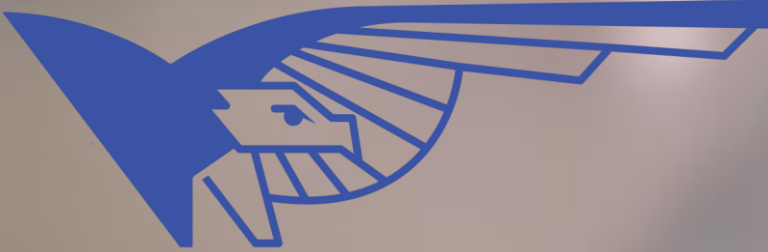
Carrier Updates

ASG-Trak™ will keep you informed about the status and progress of your shipments using live APIs with all major shipping lines.



Proactive Alerts

Get notified about delays, exceptions, and other critical events in real-time using milestone and exception events.



Benefits of ASG-Trak™

1

Improved Efficiency

Streamline your logistics processes and eliminate manual tracking, freeing up your team to focus on core business activities.

2

Enhanced Visibility

Gain genuine real-time insights into your supply chain, enabling you to make informed decisions and respond quickly to changes.

3

Reduced Costs

Optimize your transportation and logistics expenses through data-driven decisions and proactive issue resolution.

4

Improved Customer Experience

Provide your customers with transparent and reliable shipment information, enhancing their satisfaction and loyalty.





How ASG-Trak™ Works

1

Sign Up and start booking

Register your account and start booking your freight with us

2

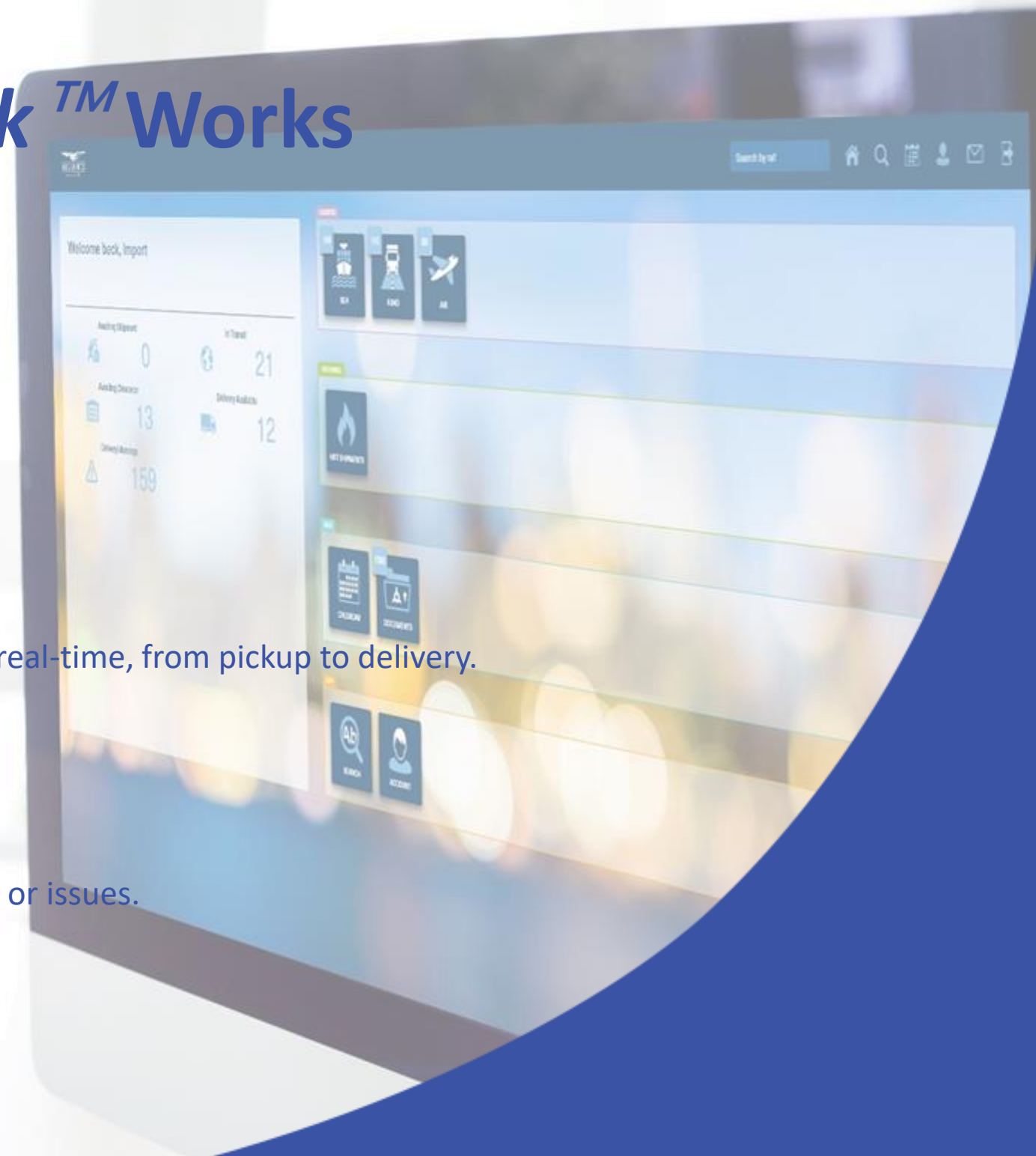
Track Shipments

Log into ASG-Trak and monitor the status of your shipments in real-time, from pickup to delivery.

3

Manage Exceptions

Receive alerts and take immediate action to address any delays or issues.





Customised Reporting and Analytics

Advanced Dashboards

Visualise your shipment data with intuitive dashboards and reports, enabling data-driven decision-making.

Performance Metrics

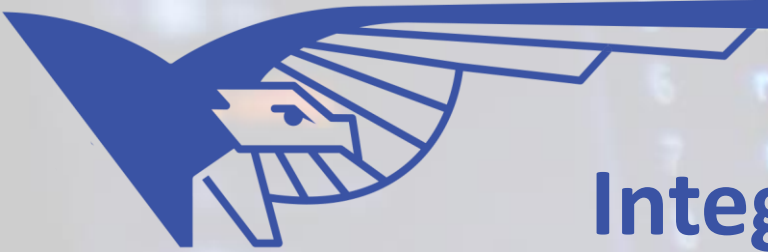
Track key performance indicators, such as on-time delivery rates and transit times, to identify areas for improvement.

Customised Reports

Generate custom reports tailored to your specific business needs, providing valuable insights into your logistics operations.

Export and Share

Easily export and share your reports with stakeholders, enabling seamless collaboration and communication.



Integrating ASG-Trak™ with Your Systems

1

API Integration

Seamlessly integrate the portal with your existing software and systems, such as your ERP or WMS, for a streamlined workflow.

2

Data Sync

Ensure real-time data synchronisation between the portal and your internal systems, eliminating manual data entry and errors.

3

Custom Configurations

Tailor ASG-Trak's capabilities to your specific business requirements, ensuring a perfect fit with your operations.



Conclusion and Next Steps

1

Streamline Your Logistics

ASG-Trak provides insight to enable you to optimise your supply chain and gain a competitive edge.

2

Experience the Difference

Sign up today and discover how *ASG-Trak* can transform your logistics operations and enhance customer satisfaction.

3

Get Started

Reach out to our team to learn more about the portal and how to get started with your personalised implementation.



sales@allianceshippinggroup.co.uk



www.allianceshippinggroup.co.uk